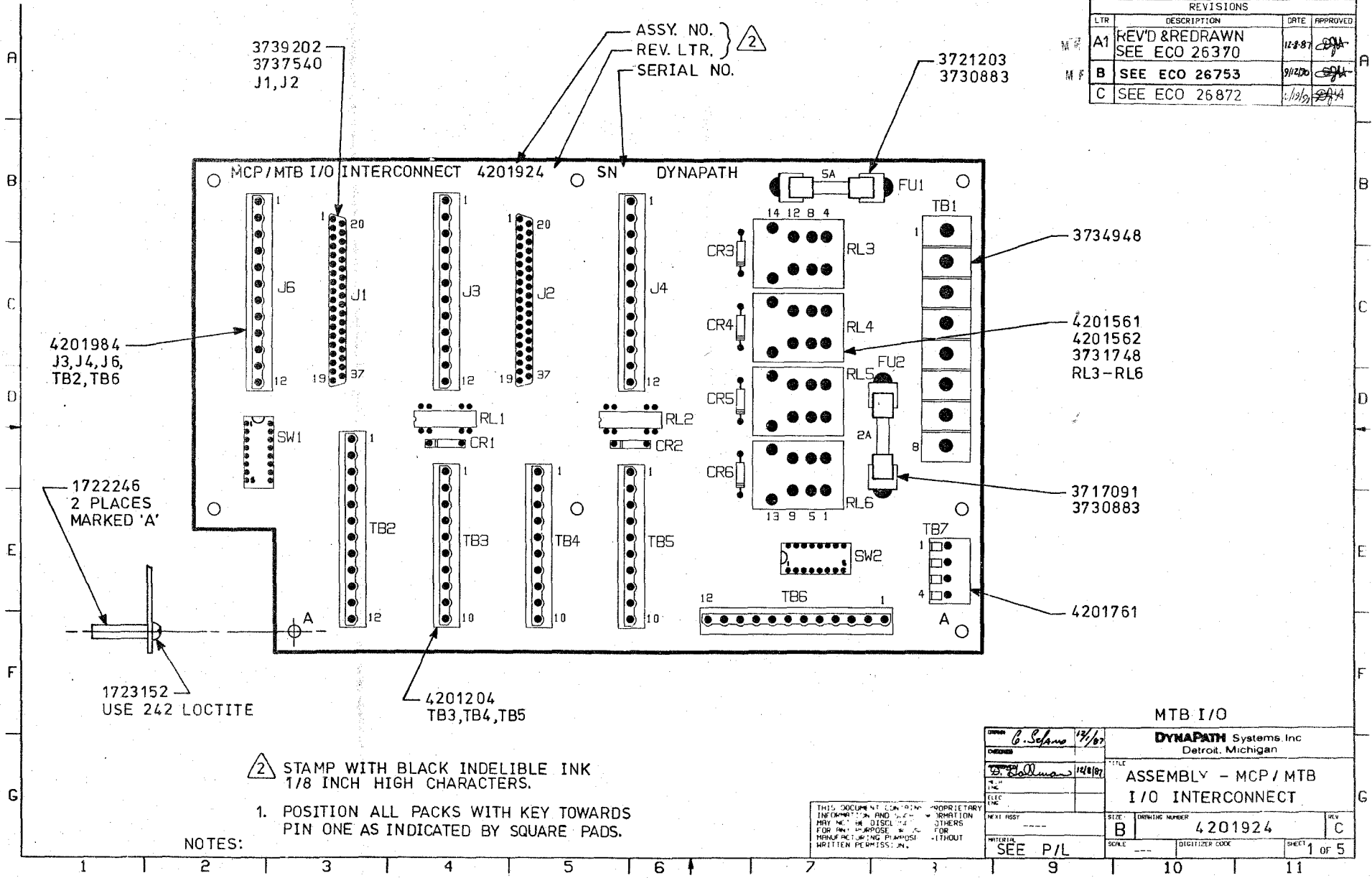


REVISIONS			
LTR	DESCRIPTION	DATE	APPROVED
A1	REV'D & REDRAWN SEE ECO 26370	11-2-87	<i>[Signature]</i>
B	SEE ECO 26753	9/12/87	<i>[Signature]</i>
C	SEE ECO 26872	11/19/87	<i>[Signature]</i>



ASSY. NO. }
REV. LTR. } 2
SERIAL NO. }

3721203
3730883

3739202
3737540
J1, J2

4201984
J3, J4, J6,
TB2, TB6

3734948

4201561
4201562
3731748
RL3-RL6

3717091
3730883

4201761

1722246
2 PLACES
MARKED 'A'

1723152
USE 242 LOCTITE

4201204
TB3, TB4, TB5

2 STAMP WITH BLACK INDELIBLE INK
1/8 INCH HIGH CHARACTERS.

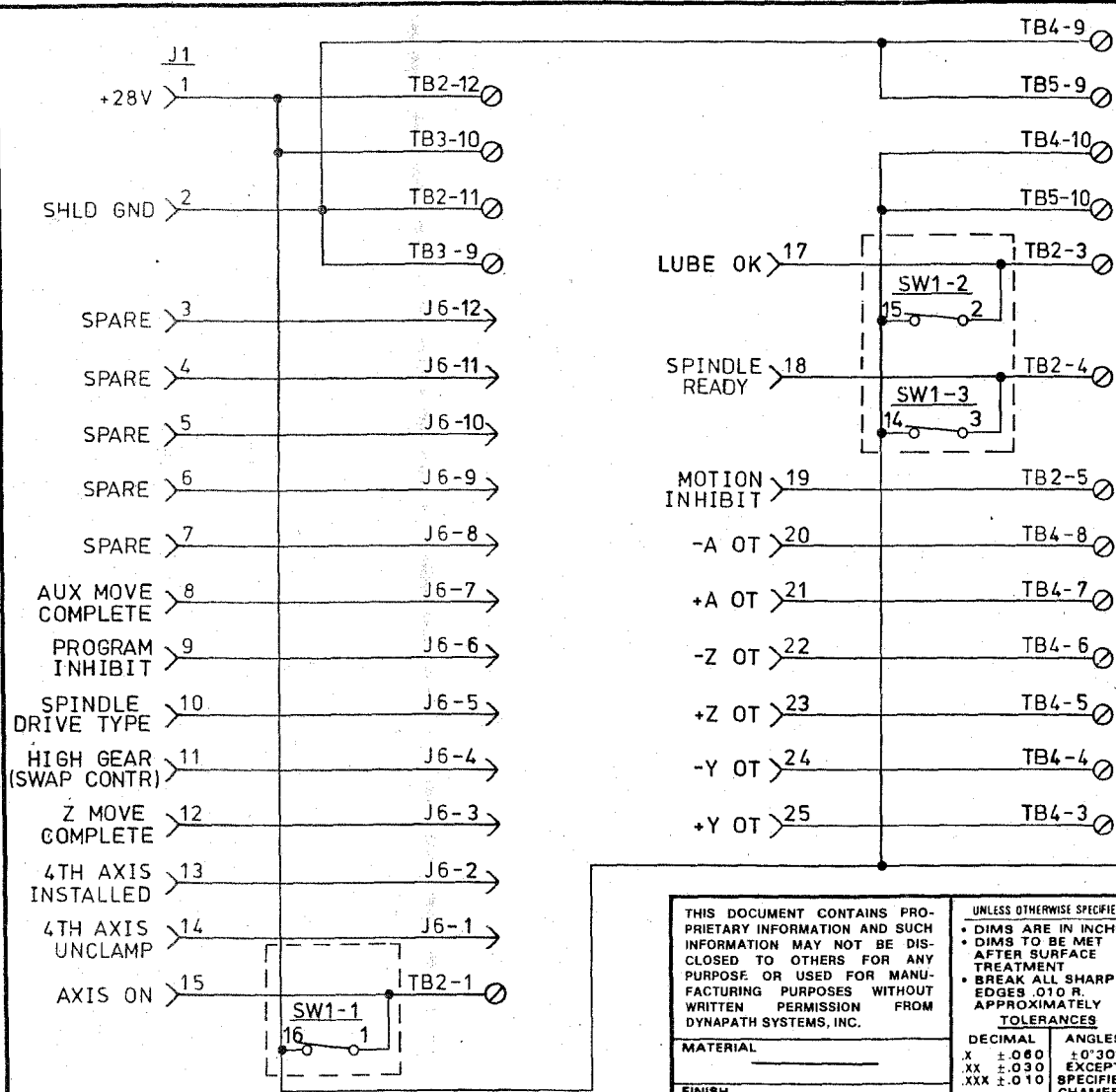
1. POSITION ALL PACKS WITH KEY TOWARDS
PIN ONE AS INDICATED BY SQUARE PADS.

NOTES:

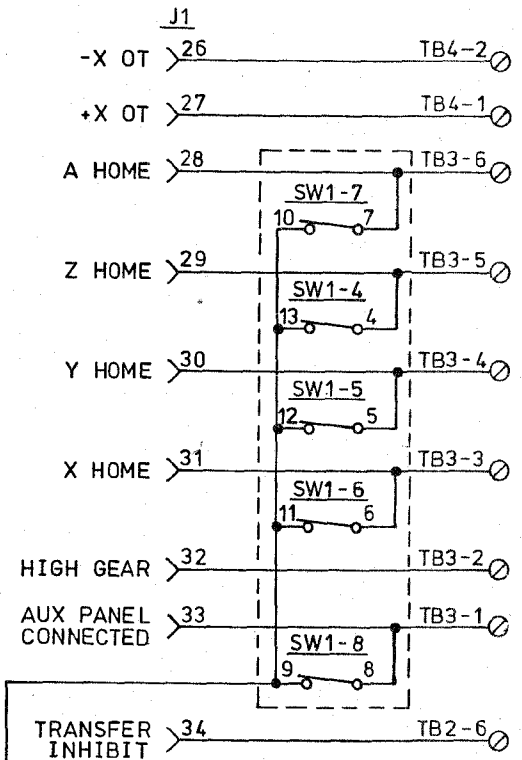
THIS DOCUMENT CONTAINS PROPRIETARY INFORMATION AND SHALL BE KEPT CONFIDENTIAL FOR THE EXCLUSIVE USE OF THE MANUFACTURING DIVISION WITHOUT WRITTEN PERMISSION.

DESIGNER <i>B. Sefano</i>	DATE 12/10/87	DYNAPATH Systems Inc Detroit, Michigan	
CHECKED <i>[Signature]</i>	DATE 12/18/87	TITLE ASSEMBLY - MCP / MTB I/O INTERCONNECT	
MATERIAL SEE P/L	SIZE B	DRAWING NUMBER 4201924	REV C
SCALE ---	DIGITIZER CODE		SHEET 1 OF 5

MTB I/O



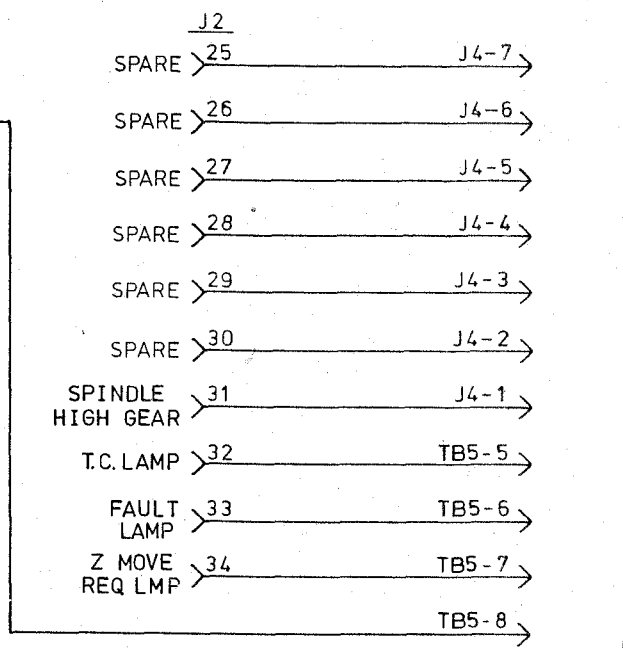
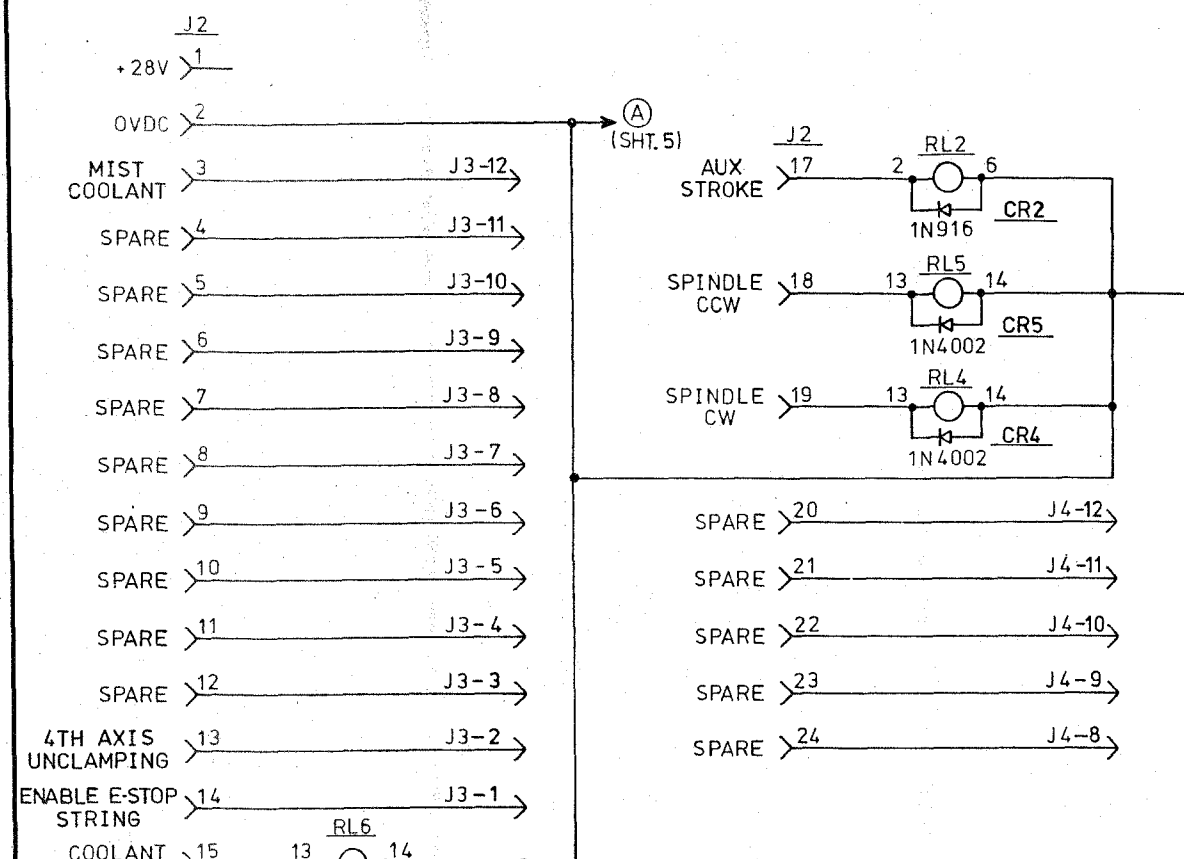
REVISIONS			
LTR	DESCRIPTION	DATE	APPROVED
—	SEE SHT. 1		



MTB I/O

THIS DOCUMENT CONTAINS PROPRIETARY INFORMATION AND SUCH INFORMATION MAY NOT BE DISCLOSED TO OTHERS FOR ANY PURPOSE OR USED FOR MANUFACTURING PURPOSES WITHOUT WRITTEN PERMISSION FROM DYNAPATH SYSTEMS, INC.		UNLESS OTHERWISE SPECIFIED • DIMS ARE IN INCHES • DIMS TO BE MET AFTER SURFACE TREATMENT • BREAK ALL SHARP EDGES .010 R. APPROXIMATELY		DRAWN <i>C. S. Lavo</i> 9/4/87 CHECKED APPROVED <i>D. Hallman</i> 9-30-87 MECH ENGR ELECT ENGR		DYNAPATH Systems, Inc. Detroit, Michigan	
MATERIAL _____ FINISH _____		DECIMAL X ±.060 XX ±.030 XXX ±.010		ANGLES ±0°30' EXCEPT SPECIFIED CHAMFER ±10°		TITLE ASSEMBLY - MCP / MTB I/O INTERCONNECT	
NEXT ASSY. _____ FINAL ASSY. _____		SIZE B		4201924		REV. C	
SCALE _____		SHEET 2 OF 5					

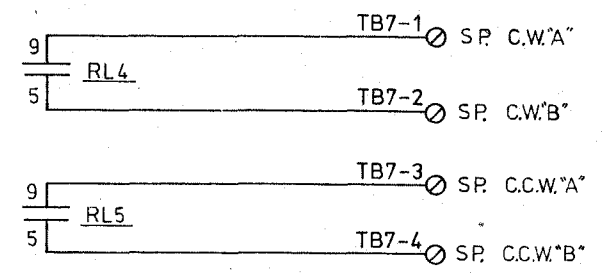
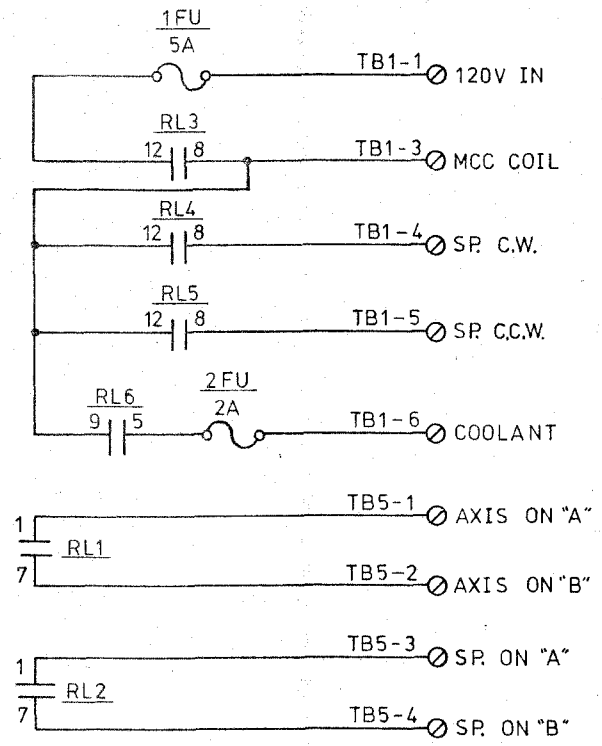
REVISIONS			
LTR	DESCRIPTION	DATE	APPROVED
-	SEE SHT. 1		



THIS DOCUMENT CONTAINS PROPRIETARY INFORMATION AND SUCH INFORMATION MAY NOT BE DISCLOSED TO OTHERS FOR ANY PURPOSE OR USED FOR MANUFACTURING PURPOSES WITHOUT WRITTEN PERMISSION FROM DYNAPATH SYSTEMS, INC.	UNLESS OTHERWISE SPECIFIED		DRAWN <i>C. Spawo</i> 9/16/87		DYNAPATH Systems, Inc. Detroit, Michigan	
	• DIMS ARE IN INCHES • DIMS TO BE MET AFTER SURFACE TREATMENT • BREAK ALL SHARP EDGES .010 R. APPROXIMATELY		CHECKED	APPROVED <i>D. Hallman</i> 9-30-87	TITLE ASSEMBLY - MCP/MTB I/O INTERCONNECT	
MATERIAL	DECIMAL	ANGLES	NEXT ASSY.		SIZE	REV.
FINISH	.X ±.060 .XX ±.030 .XXX ±.010	±0°30' EXCEPT SPECIFIED CHAMFER ±10°	FINAL ASSY.		B	4201924
					SCALE	SHEET 3 OF 5

85365
P.R.M.

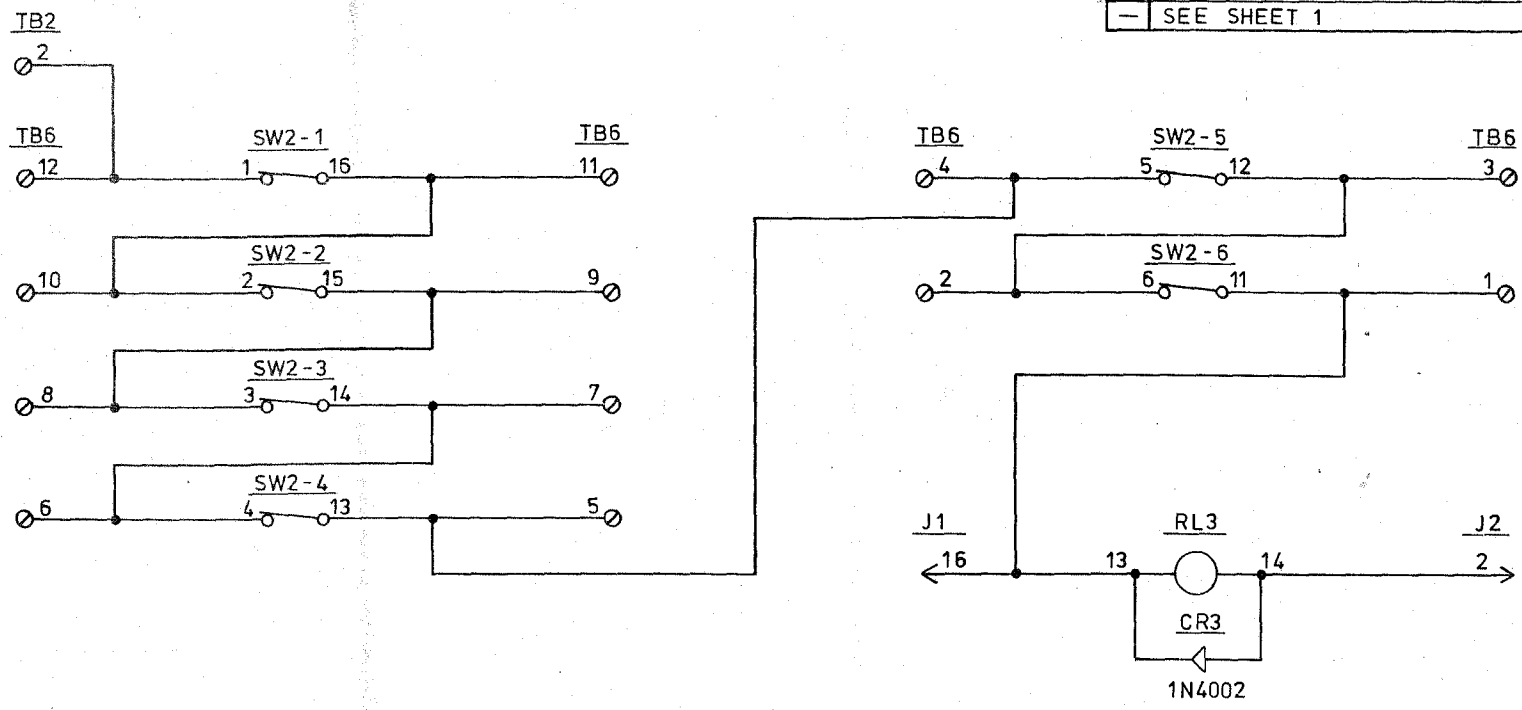
REVISIONS			
LTR	DESCRIPTION	DATE	APPROVED
—	SEE SHT. 1		



MTB I/O

THIS DOCUMENT CONTAINS PROPRIETARY INFORMATION AND SUCH INFORMATION MAY NOT BE DISCLOSED TO OTHERS FOR ANY PURPOSE OR USED FOR MANUFACTURING PURPOSES WITHOUT WRITTEN PERMISSION FROM DYNAPATH SYSTEMS, INC.	UNLESS OTHERWISE SPECIFIED • DIMS ARE IN INCHES • DIMS TO BE MET AFTER SURFACE TREATMENT • BREAK ALL SHARP EDGES .010 R. APPROXIMATELY TOLERANCES DECIMAL ANGLES X ±.060 ±0°30' XX ±.030 EXCEPT .XXX ±.010 SPECIFIED CHAMFER ±10°	DRAWN <i>C. S. [Signature]</i> 9/16/87	DYNAPATH Systems, Inc. Detroit, Michigan	
		CHECKED _____	APPROVED <i>[Signature]</i> 9-30-87	TITLE ASSEMBLY - MCP / MTB I/O INTERCONNECT
MATERIAL _____	NEXT ASSY. _____	MECH ENGR _____	SIZE B	4201924
FINISH _____	FINAL ASSY. _____	ELECT ENGR _____	SCALE _____	REV. C
			SHEET 4 OF 5	

REVISIONS			
LTR	DESCRIPTION	DATE	APPROVED
-	SEE SHEET 1		



MTB I/O

THIS DOCUMENT CONTAINS PROPRIETARY INFORMATION AND SUCH INFORMATION MAY NOT BE DISCLOSED TO OTHERS FOR ANY PURPOSE OR USED FOR MANUFACTURING PURPOSES WITHOUT WRITTEN PERMISSION FROM DYNAPATH SYSTEMS, INC.	UNLESS OTHERWISE SPECIFIED • DIMS ARE IN INCHES • DIMS TO BE MET AFTER SURFACE TREATMENT • BREAK ALL SHARP EDGES .010 R. APPROXIMATELY	DRAWN <i>G. S. Sano</i> 7/1/87 CHECKED _____	DYNAPATH Systems, Inc. Detroit, Michigan
	DECIMAL .X ± .060 .XX ± .030 .XXX ± .010	ANGLES ± 0°30' EXCEPT SPECIFIED CHAMFER ± 10'	APPROVED <i>D. Stallman</i> 9-30-87 MECH ENGR _____ ELECT ENGR _____
MATERIAL _____ FINISH _____	NEXT ASSY. _____ FINAL ASSY. _____	SIZE B	4201924 REV. C
		SCALE _____	SHEET 5 OF 5

66285

PRM