

- 11 = 4201594 SERVO Z
- 10 = 4201593 SERVO Y
- 9 = 4203641 SERVO X
- 8 = 4204483 SERVO (3)
- 7 = 4204230 PANEL
- 6 = 4203874 SD/L
- 5 = 4204178, 4204179 COMM
- 4 = 4204276 HANDWHEEL
- 3 = 4204429 CONTROL
- 2 = 4203809 CRT
- 1 = SEE SHT 2/3
- = BY CUSTOMER

CABLE LIST

*ISA Local  
(PLC) I/O*

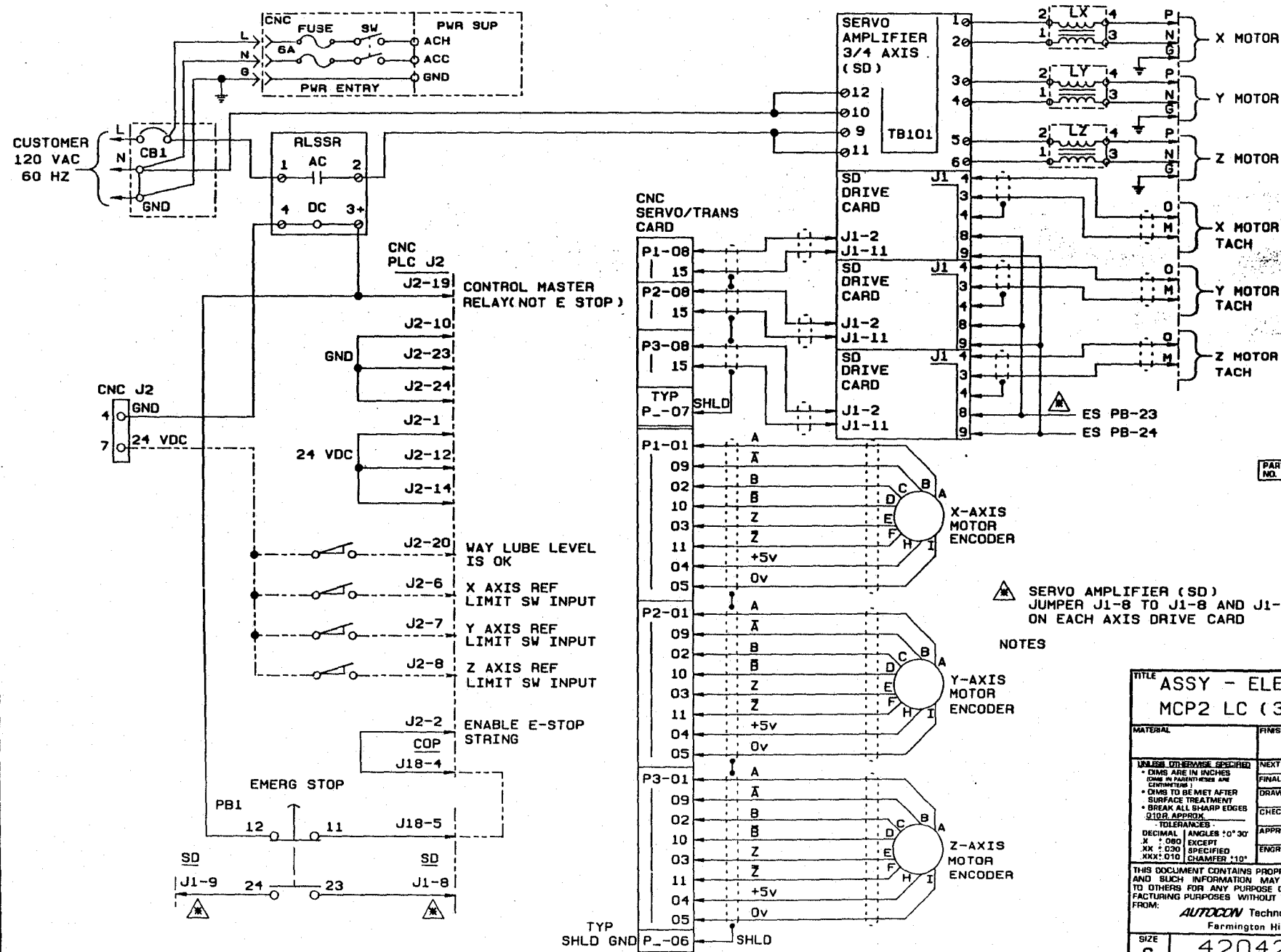
PART NO. 4204271

**TITLE**  
ASSY - ELECTRICAL  
MCP2 LC (3X) ISA

MATERIAL	FINISH
UNLESS OTHERWISE SPECIFIED: • DIMS ARE IN INCHES (DIMS IN PARENTHESES ARE CENTIMETERS) • DIMS TO BE MET AFTER SURFACE TREATMENT • BREAK ALL SHARP EDGES 0.10R APPROX.	NEXT ASSY: 4204560 FINAL ASSY:
TOLERANCES: DECIMAL ANGLES: 0° 30' X: 0.00 EXCEPT XX: 0.30 SPECIFIED XXX: 0.10 CHAMFER: *10°	DRAWN: <i>Smpl</i> 4/1/85 CHECKED: APPROVED: <i>DS</i> 4/4/85 ENGR APPROVAL:

THIS DOCUMENT CONTAINS PROPRIETARY INFORMATION AND SUCH INFORMATION MAY NOT BE DISCLOSED TO OTHERS FOR ANY PURPOSE OR USED FOR MANUFACTURING PURPOSES WITHOUT WRITTEN PERMISSION FROM:  
**AUTODCON** Technologies, Inc.  
Farmington Hills, MI

SIZE <b>C</b>	4204271	REV <b>A</b>
SCALE	SHEET 1 OF 3	

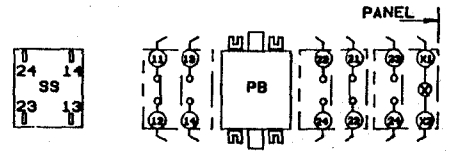
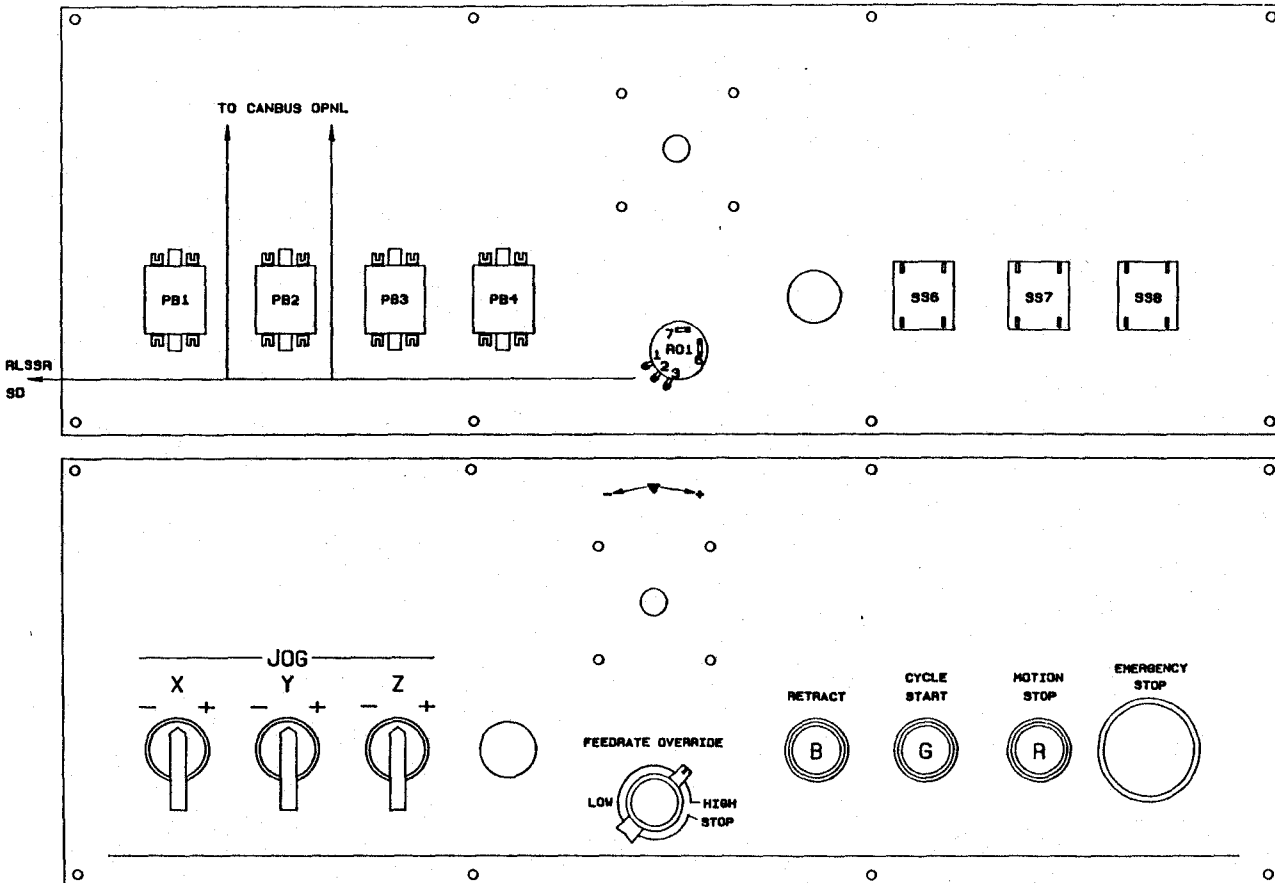


PART NO. 4204271

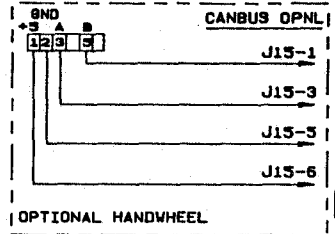
▲ SERVO AMPLIFIER (SD)  
JUMPER J1-8 TO J1-8 AND J1-9 TO J1-9  
ON EACH AXIS DRIVE CARD

NOTES

TITLE	
ASSY - ELECTRICAL MCP2 LC (3X) ISA	
MATERIAL	FINISH
UNLESS OTHERWISE SPECIFIED • DIMS ARE IN INCHES (DIM IN PARENTHESES ARE FRONT VIEW) • DIMS TO BE MET AFTER SURFACE TREATMENT • BREAK ALL SHARP EDGES • SLD. APPROX. TOLERANCES	NEXT ASSY. FINAL ASSY. DRAWN <i>Grnd</i> 4/1/85 CHECKED APPROVED ENGR. APPROVAL
DECIMAL ANGLES 10° 30' X .030 EXCEPT XX .020 SPECIFIED XXX .010 CHAMFER 10°	
THIS DOCUMENT CONTAINS PROPRIETARY INFORMATION AND SUCH INFORMATION MAY NOT BE DISCLOSED TO OTHERS FOR ANY PURPOSE OR USED FOR MANU- FACTURING PURPOSES WITHOUT WRITTEN PERMISSION FROM: <b>AUTOCOR</b> Technologies, Inc. Farmington Hills, MI	
SIZE C	4204271
SCALE	REV. A
SHEET 2 OF 3	

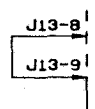


TERMINAL IDENTIFICATION

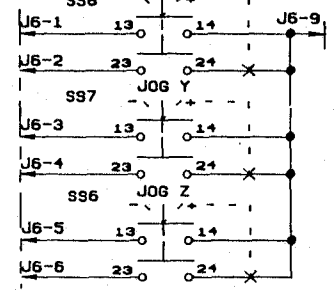


PART NO. 4204271

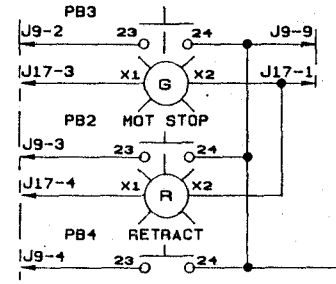
CANBUS OPNL



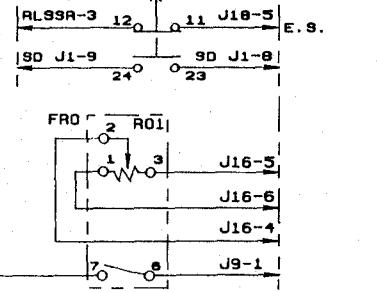
CNBS OPNL JOG X CNBS OPNL



CNBS OPNL CYCLE START CNBS OPNL



PB1 E-STOP SWITCH CNBS OPNL



TITLE <b>ASSY-ELECTRICAL MCP2 LC (3X) ISA</b>	
MATERIAL	FINISH
UNLESS OTHERWISE SPECIFIED • DIMS ARE IN INCHES (DIM IN PARENTHESES ARE CENTIMETERS)	NEXT ASSY.
• DIMS TO BE MET AFTER SURFACE TREATMENT	FINAL ASSY.
• BREAK ALL SHARP EDGES D10R APPROX	DRAWN <i>Smk</i> <i>W/S</i>
TOLERANCES	CHECKED
DECIMAL ANGLES 10° 30'	APPROVED
X : 080 EXCEPT	ENGR APPROVAL
XX : 030 SPECIFIED	
XXX : 010 CHAMFER 10°	
THIS DOCUMENT CONTAINS PROPRIETARY INFORMATION AND SUCH INFORMATION MAY NOT BE DISCLOSED TO OTHERS FOR ANY PURPOSE OR USED FOR MANU- FACTURING PURPOSES WITHOUT WRITTEN PERMISSION FROM: <b>AUTOCOM Technologies, Inc.</b> Farmington Hills, MI	
SIZE <b>C</b>	<b>4204271</b>
SCALE	REV. <b>A</b>
	SHEET 3 OF 3