

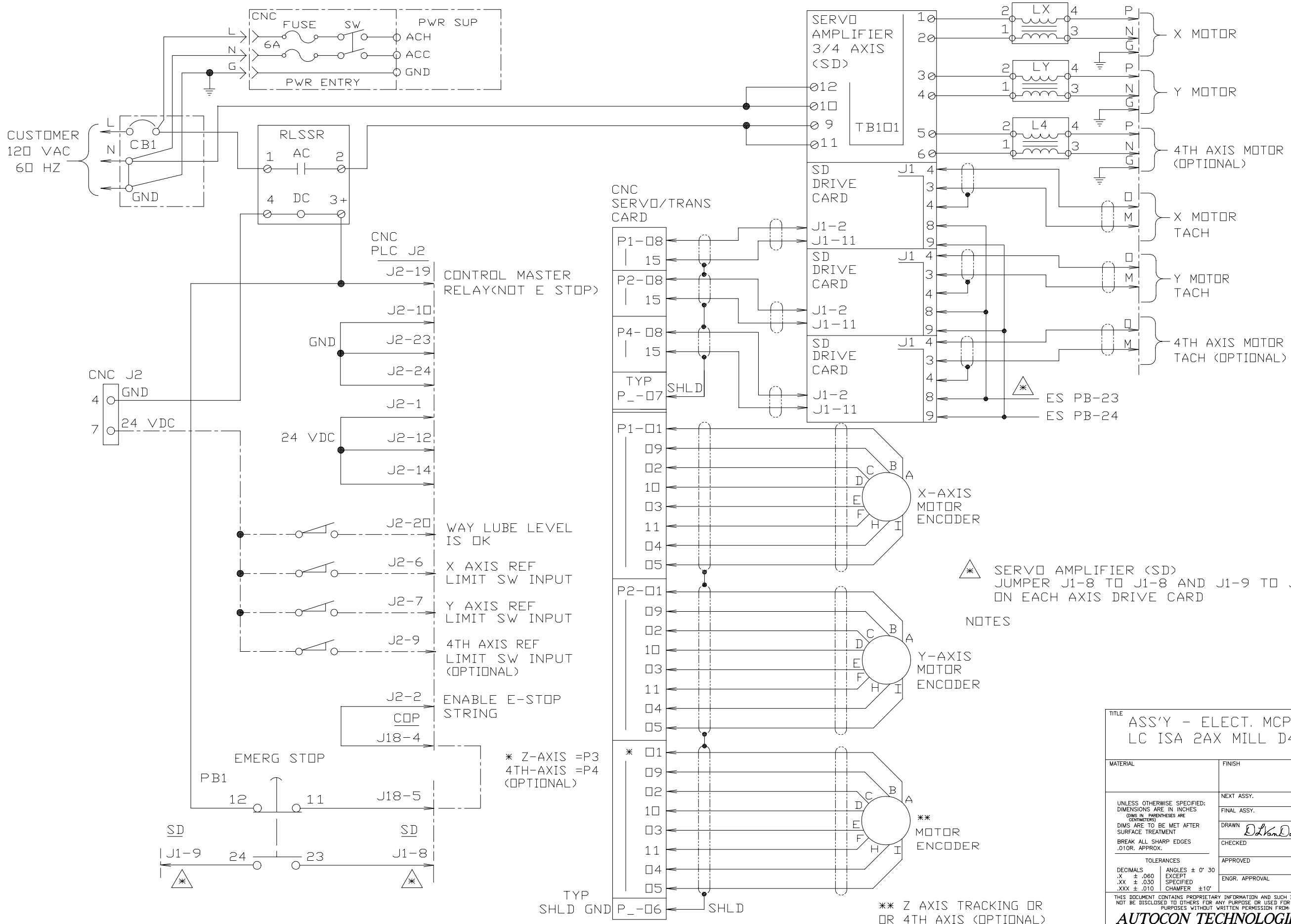
- 11 = * SERVO 4TH AXIS (OPTIONAL)
- 10 = 4201593 SERVO Y
- 9 = 4203641 SERVO X
- 8 = 4204483 SERVO (*)
- 7 = 4204230 PANEL
- 6 = 4203874 SD/L
- 5 = 4204178, 4204179 COMM
- 4 = 4204276 HANDWHEEL
- 3 = 4204429 CONTROL
- 2 = 4203809 CRT
- 1 = SEE SHT 2/3
- = BY CUSTOMER

CABLE LIST

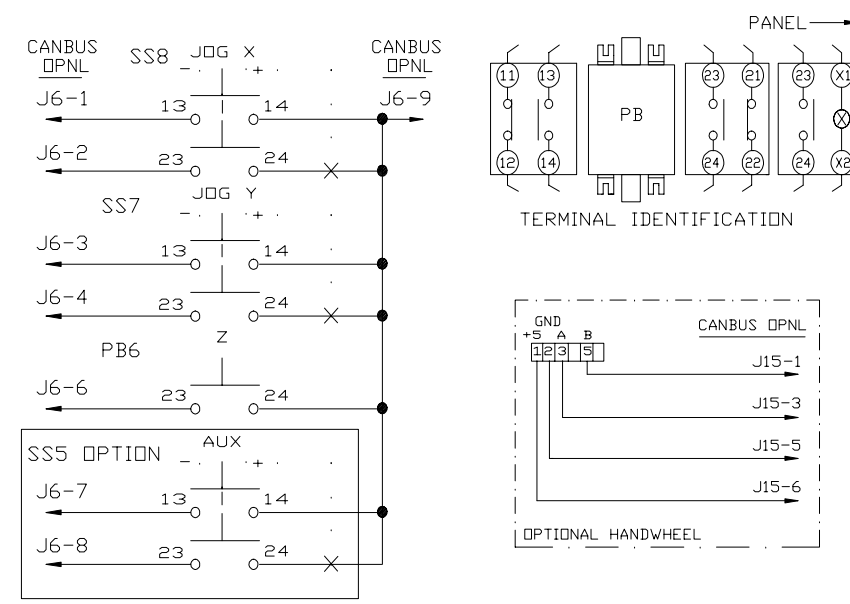
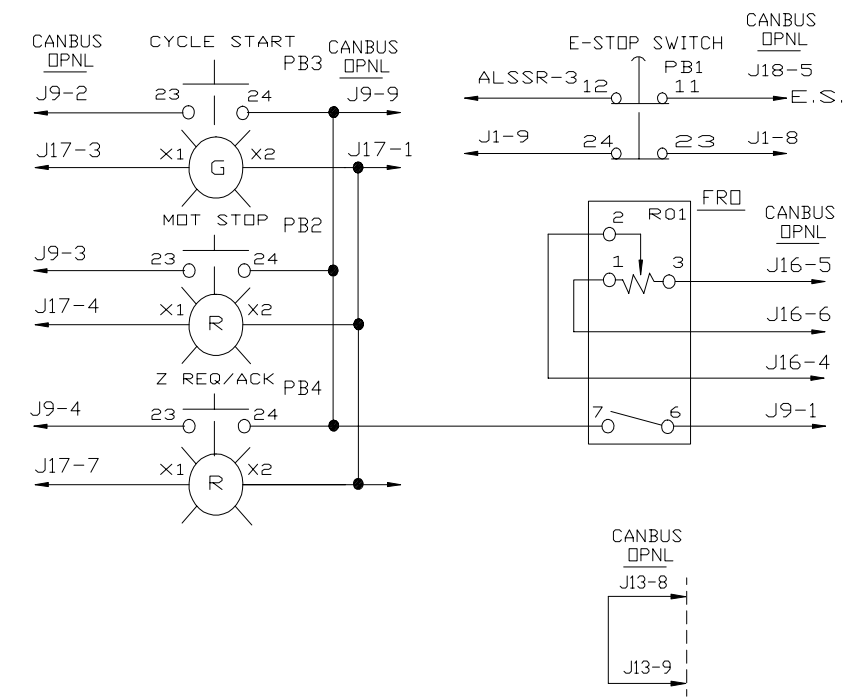
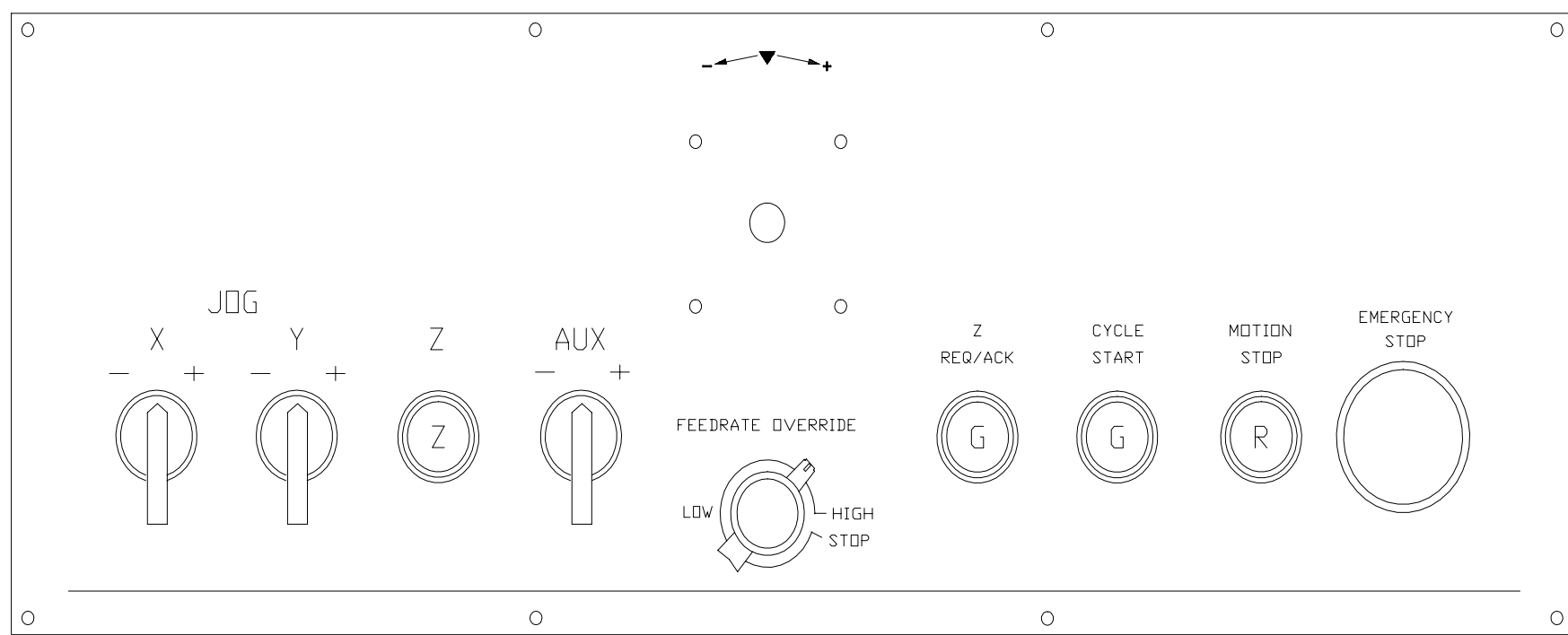
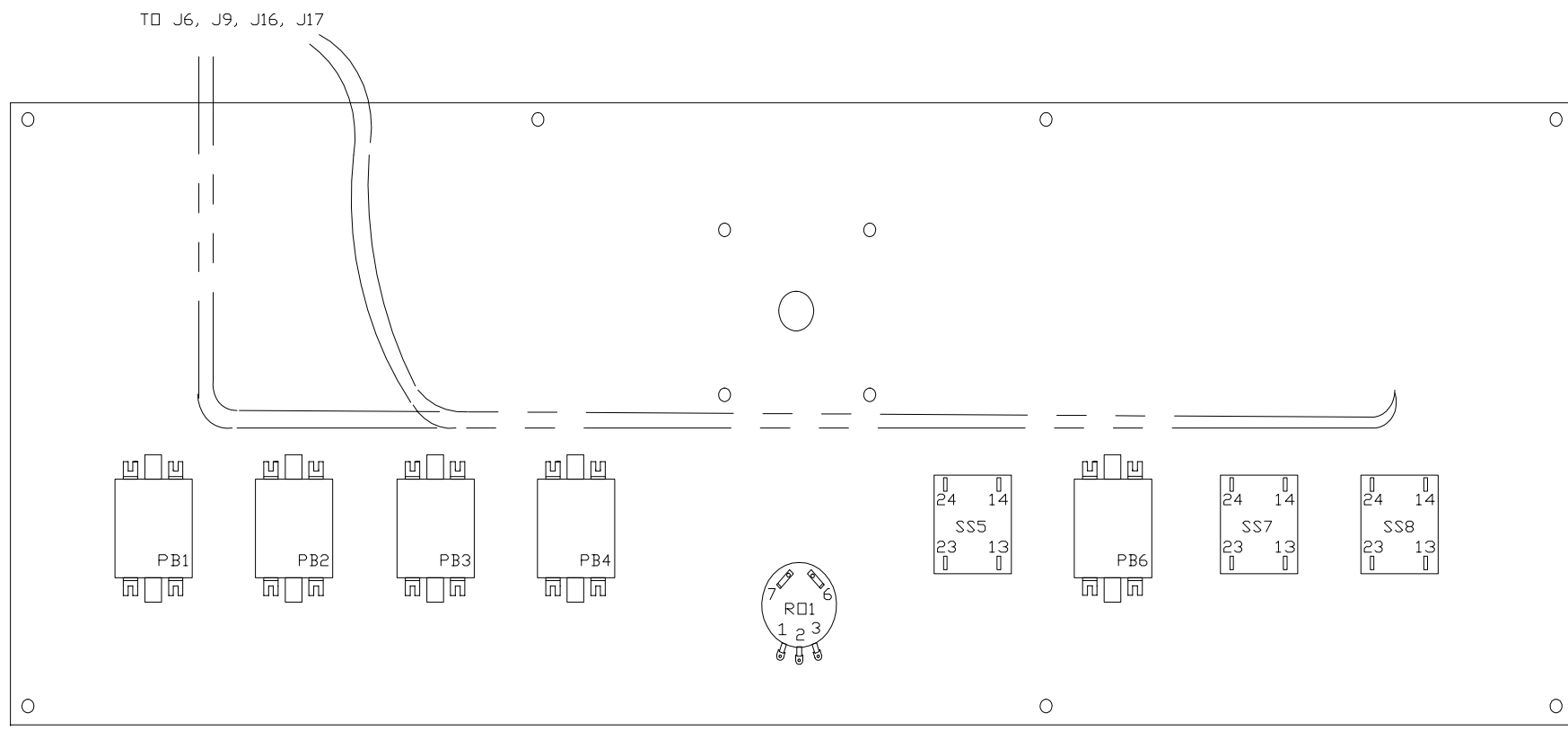
* 4TH AXIS IS OPTIONAL AND CABLE IS BUILT TO CUSTOMER SPEC

** FOR OPTIONAL 4TH AXIS

TITLE ASS'Y - ELECT. MCP2 LC ISA 2AX MILL D40/50			
MATERIAL		FINISH	
UNLESS OTHERWISE SPECIFIED: DIMENSIONS ARE IN INCHES (DIMS IN PARENTHESES ARE CENTIMETERS) DIMS ARE TO BE MET AFTER SURFACE TREATMENT BREAK ALL SHARP EDGES .010R. APPROX.		NEXT ASSY. FINAL ASSY.	
TOLERANCES		DRAWN <i>D. Van Dam</i>	DATE 17OCT96
DECIMALS	ANGLES ± 0° 30'	CHECKED	DATE
.X ± .060	EXCEPT SPECIFIED	APPROVED	DATE
.XX ± .030	CHAMFER ± 10°	ENGR. APPROVAL	DATE
.XXX ± .010			
THIS DOCUMENT CONTAINS PROPRIETARY INFORMATION AND SUCH INFORMATION MAY NOT BE DISCLOSED TO OTHERS FOR ANY PURPOSE OR USED FOR MANUFACTURING PURPOSES WITHOUT WRITTEN PERMISSION FROM: AUTOCON TECHNOLOGIES, INC FARMINGTON HILLS, MI			
SIZE C	DWG NO. 4204955	REV A	
SCALE	SHEET 1 OF 3		



TITLE ASS'Y - ELECT. MCP2 LC ISA 2AX MILL D40/50	
MATERIAL	FINISH
NEXT ASSY.	
FINAL ASSY.	
UNLESS OTHERWISE SPECIFIED: DIMENSIONS ARE IN INCHES (DIMS IN PARENTHESES ARE CENTIMETERS) DIM'S ARE TO BE MET AFTER SURFACE TREATMENT BREAK ALL SHARP EDGES .010R. APPROX.	DRAWN <i>D. Van Dam</i> DATE 17OCT96
CHECKED	DATE
APPROVED	DATE
ENGR. APPROVAL	DATE
TOLERANCES DECIMALS ANGLES ± 0° 30' .X ± .060 EXCEPT SPECIFIED .XX ± .030 CHAMFER ± 10° .XXX ± .010	
THIS DOCUMENT CONTAINS PROPRIETARY INFORMATION AND SUCH INFORMATION MAY NOT BE DISCLOSED TO OTHERS FOR ANY PURPOSE OR USED FOR MANUFACTURING PURPOSES WITHOUT WRITTEN PERMISSION FROM AUTOCON TECHNOLOGIES, INC FARMINGTON HILLS, MI	
SIZE C	DWG NO. 4204955
SCALE	REV A
SHEET 2 OF 3	



TITLE ASS'Y - ELECT MCP2 LC ISA 2AX MILL D40/50			
MATERIAL		FINISH	
UNLESS OTHERWISE SPECIFIED: DIMENSIONS ARE IN INCHES (DIMS IN PARENTHESES ARE CENTIMETERS) DIMS ARE TO BE MET AFTER SURFACE TREATMENT BREAK ALL SHARP EDGES .010R. APPROX.		NEXT ASSY. FINAL ASSY.	
TOLERANCES		DRAWN <i>D. Van Dam</i>	DATE 17OCT96
DECIMALS	ANGLES ± 0° 30'	CHECKED	DATE
.X ± .060	EXCEPT SPECIFIED	APPROVED	DATE
.XX ± .030	CHAMFER ± 10°	ENGR. APPROVAL	DATE
.XXX ± .010			
THIS DOCUMENT CONTAINS PROPRIETARY INFORMATION AND SUCH INFORMATION MAY NOT BE DISCLOSED TO OTHERS FOR ANY PURPOSE OR USED FOR MANUFACTURING PURPOSES WITHOUT WRITTEN PERMISSION FROM: AUTOCON TECHNOLOGIES, INC FARMINGTON HILLS, MI			
SIZE C	DWG NO. 4204955	REV A	
SCALE NF	SHEET 3 OF 3		