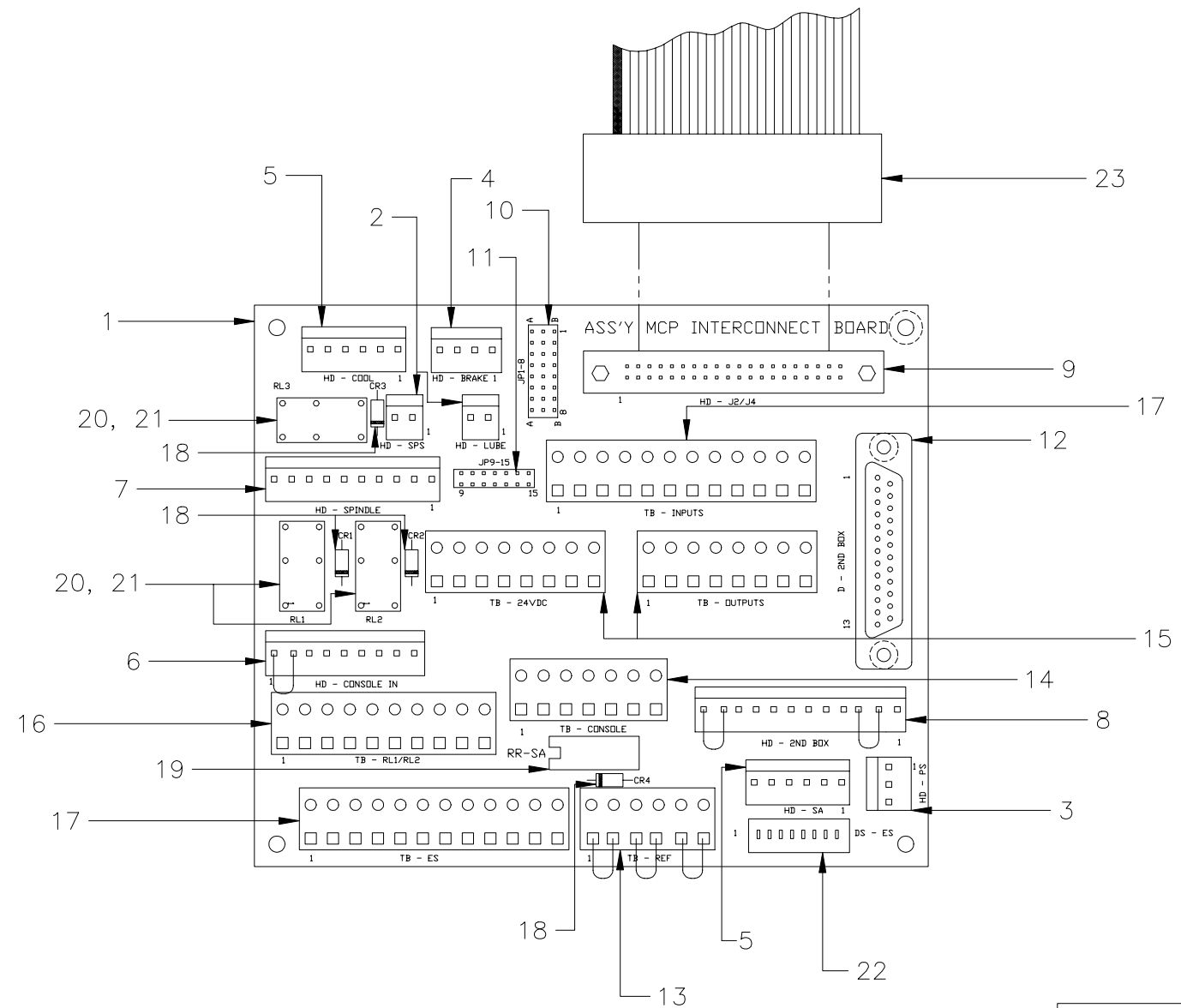
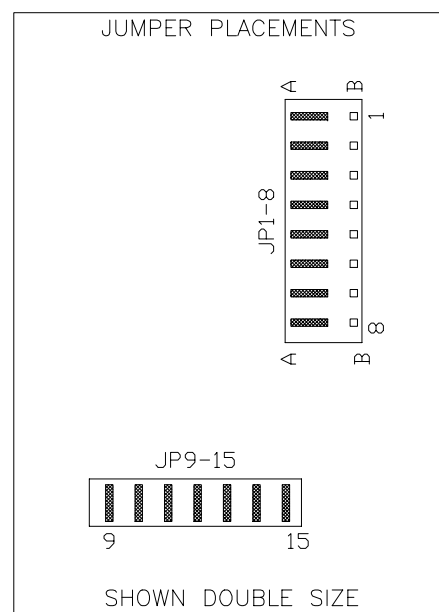


REV	ECN #	REVISION DESCRIPTION	REV BY	DATE	CHK BY	DATE	APVD BY	DATE
A	XXXX	RELEASE						
B	45	ORIGINAL DRAWING						



MATERIALS LIST			
ITEM	PART No.	NAME	QTY.
1	4205239	CARD - MCP INTERCONNECT BOARD	1
2	4205220	HEADER - 2 POSITION, LOCKING	2
3	4205221	HEADER - 3 POSITION, LOCKING	1
4	4205222	HEADER - 4 POSITION, LOCKING	1
5	4205223	HEADER - 6 POSITION, LOCKING	2
6	4205224	HEADER - 9 POSITION, LOCKING	1
7	4205225	HEADER - 10 POSITION, LOCKING	1
8	4205226	HEADER - 12 POSITION, LOCKING	1
9	4205227	HEADER - 40 POSITION, LOCKING	1
10	4205280	HEADER - TRIPLE ROW, 24 POSITION	1
11	4205235	HEADER - DOUBLE ROW, 14 POSITION	1
12	4205228	CONNECTOR - 25 POSITION D-TYPE, FEMALE-STRAIGHT	1
13	4205229	TERMINAL BLOCK - 6 POSITION, ANGLED	1
14	4205230	TERMINAL BLOCK - 7 POSITION, ANGLED	1
15	4205231	TERMINAL BLOCK - 8 POSITION, ANGLED	2
16	4205232	TERMINAL BLOCK - 10 POSITION, ANGLED	1
17	4205233	TERMINAL BLOCK - 12 POSITION, ANGLED	2
18	1718736	DIODE - SILICON (IN916)	4
19	4205242	RELAY - 1 FORM B, 24V DC COIL	1
20	4205236	RELAY - 1 FORM A & 1 FORM B, 24V DC COIL	3
21	4205237	SOCKET - RELAY	3
22	4201718	SWITCH - DIP, 8 POSITION	1
23	4205376	ASS'Y - CONNECTOR (MCP INTERCONNECT HD-2ND BOX)	1
24	4205240	ARTWORK - MCP INTERCONNECT BOARD	REF
25	4205241	SCHEMATIC - MCP INTERCONNECT BOARD (NOT SHOWN)	REF
26	4202755	JUMPERS - 2 PIN, .100" CENTERS (NOT SHOWN)	14

WIRE LIST	
FROM HD-2ND BOX	TO HD-2ND BOX
PIN #2	PIN #3
PIN #11	PIN #12
FROM TB-REF	TO TB-REF
PIN #1	PIN #2
PIN #3	PIN #4
PIN #5	PIN #6
FROM HD CONSOLE IN	TO HD CONSOLE IN
PIN #1	PIN #2

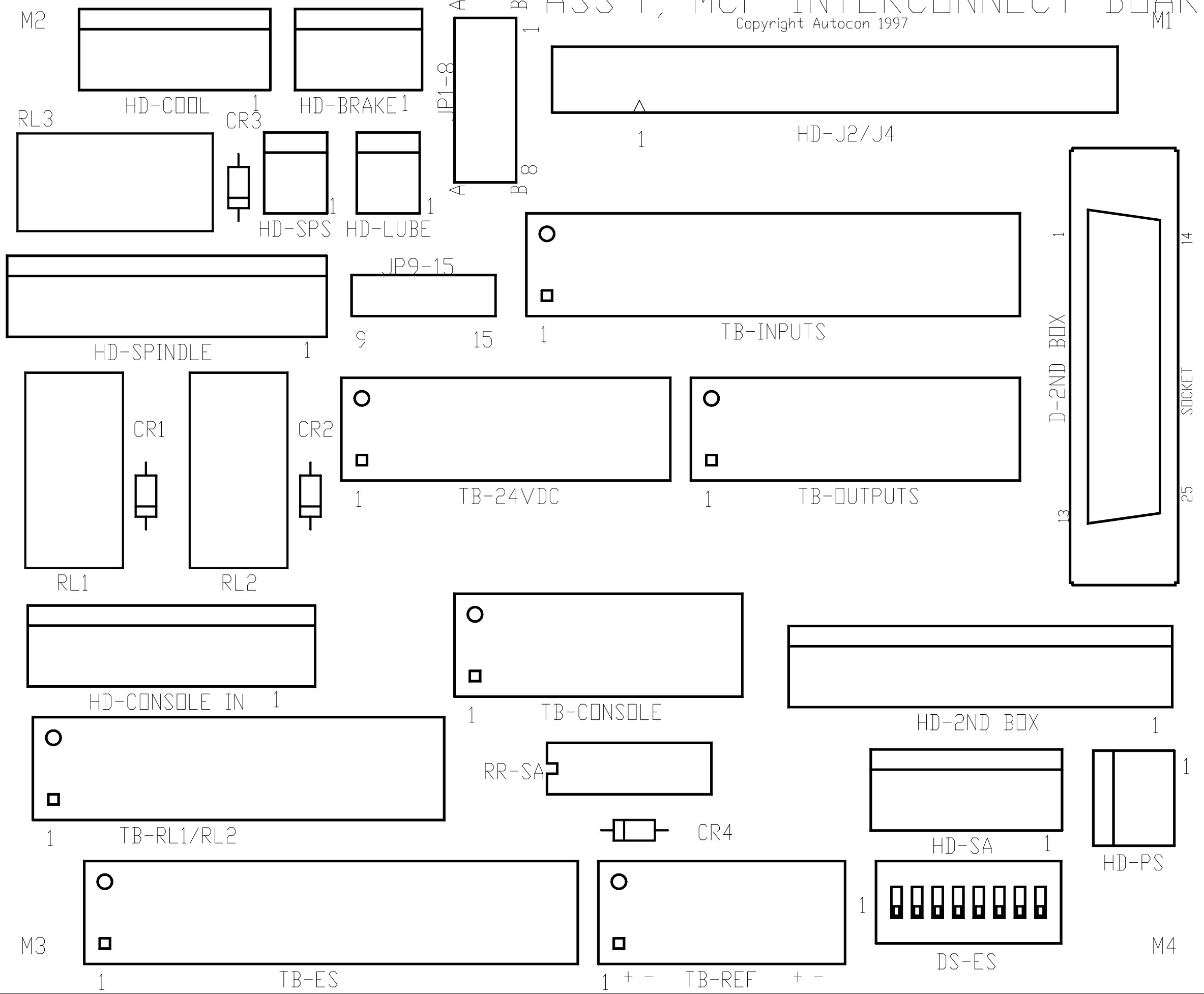


NOTE: ALL TEXT TO BE SILKSCREEN ONTO BOARD

TITLE ASS'Y - MCP INTERCONNECT BOARD			
MATERIAL SEE PARTS LIST		FINISH	
UNLESS OTHERWISE SPECIFIED: DIMENSIONS ARE IN INCHES (DIMS IN PARENTHESES ARE CENTIMETERS) DIMS ARE TO BE MET AFTER SURFACE TREATMENT BREAK ALL SHARP EDGES .010R. APPROX.		NEXT ASSY. FINAL ASSY. DRAWN B. HOYES 13APR98 CHECKED DATE	
TOLERANCES DECIMALS .X ± .060 EXCEPT .XX ± .030 SPECIFIED .XXX ± .010 CHAMFER ±10°		APPROVED ENGR. APPROVAL DATE	
THIS DOCUMENT CONTAINS PROPRIETARY INFORMATION AND SUCH INFORMATION MAY NOT BE DISCLOSED TO OTHERS FOR ANY PURPOSE OR USED FOR MANUFACTURING PURPOSES WITHOUT WRITTEN PERMISSION FROM: AUTOCON TECHNOLOGIES, INC FARMINGTON HILLS, MI			
SIZE C	DWG NO. 4205238	REV B	
SCALE	SHEET 1 OF 1		

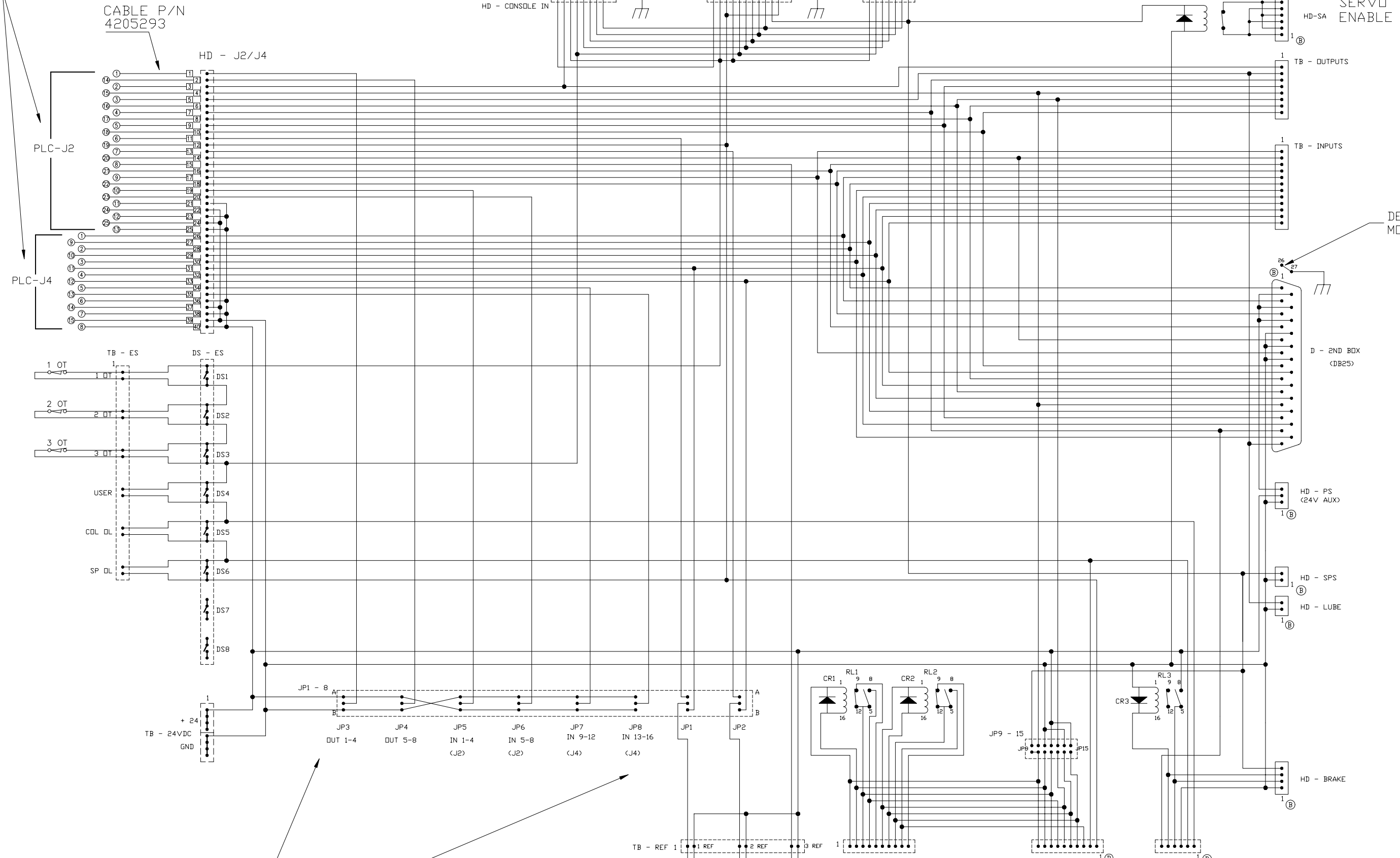
ASS'Y, MCP INTERCONNECT BOARD

Copyright Autocon 1997



REV	EDN #	REVISION DESCRIPTION	REV BY	DATE	CHK BY	DATE	APV BY	DATE
A		RELEASE						
B	1	CHANGE #1 LOC. DN HEADERS AND DB25						

Note: Refer to the Installation Guide Manual P/N DP4204678 Section 5 and the PLC *.LS File for I/O Assignment for the PLC J2/J4 Connector.



DENOTES DB25 MOUNTING PINS

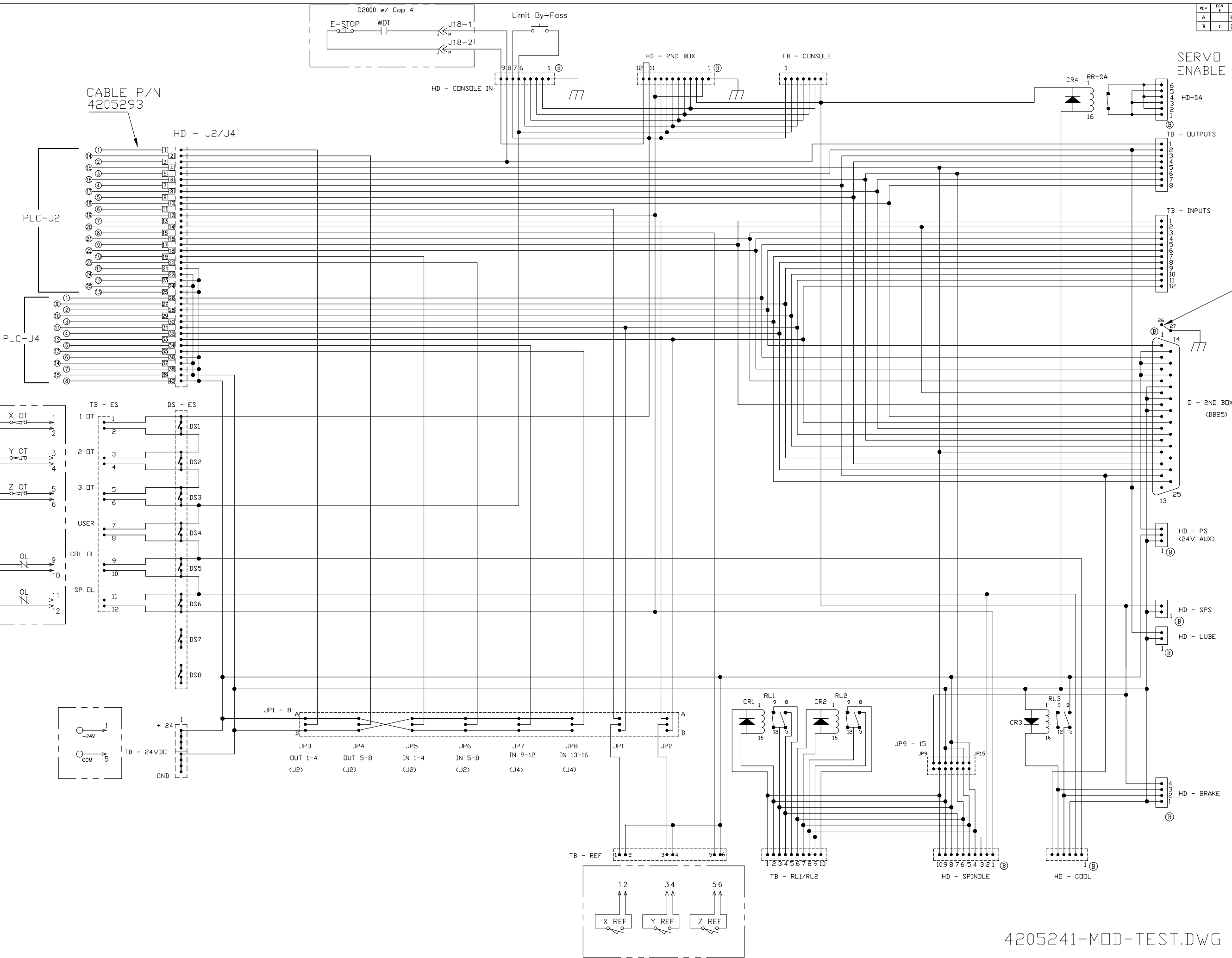
PART NO. 4205241

Note: Refer to the Installation Guide Manual P/N DP4204678 Section 5 and the PLC *.LS File for Jumper Configuration. (Active High/Active Low).

TITLE			
SCHEMATIC - MCP INTERCONNECT BOARD			
MATERIAL	FINISH		
UNLESS OTHERWISE SPECIFIED: DIMENSIONS ARE IN INCHES: (DIM IN PARENTHESES ARE DECIMALS)		NEXT ASSY.	
DIM'S ARE TO BE MET AFTER SURFACE TREATMENT		FINAL ASSY.	DATE
BREAK ALL SHARP EDGES .010R. APPROX.		DRAWN <i>DLK</i>	12SEP97
TOLERANCES		CHECKED	DATE
DECIMALS .X ± .060	ANGLES ± 0° 30'	APPROVED	DATE
.XX ± .030	EXCEPT SPECIFIED	ENGR. APPROVAL	DATE
.XXX ± .010	CHAMFER ± 10°		
THIS DOCUMENT CONTAINS PROPRIETARY INFORMATION AND SUCH INFORMATION MAY NOT BE DISCLOSED TO OTHERS FOR ANY PURPOSE OR USED FOR MANUFACTURING PURPOSES WITHOUT WRITTEN PERMISSION FROM			
AUTOCON TECHNOLOGIES, INC			
FARMINGTON HILLS, MI			
SIZE D	DWG NO. 4205241	REV B	
SCALE	SHEET 1 OF 1		

4205241-MOD.DWG

REV	EDN #	REVISION DESCRIPTION	REV BY	DATE	CHK BY	DATE	APPV BY	DATE
A		RELEASE						
B	1	CHANGE #1 LOC. DN HEADERS AND DB25						



DENOTES DB25 MOUNTING PINS

PART NO. 4205241

TITLE SCHEMATIC - MCP INTERCONNECT BOARD

MATERIAL		FINISH	
UNLESS OTHERWISE SPECIFIED: DIMENSIONS ARE IN INCHES: (DIM. IN PARENTHESES ARE METRIC)		NEXT ASSY.	
DIMENSIONS ARE TO BE MET AFTER SURFACE TREATMENT		FINAL ASSY.	
BREAK ALL SHARP EDGES .010R. APPROX.		DRAWN <i>[Signature]</i>	DATE 12SEP97
TOLERANCES		CHECKED	DATE
DECIMALS	ANGLES ± 0° 30'	APPROVED	DATE
.X ± .060	EXCEPT	ENGR. APPROVAL	DATE
.XX ± .030	SPECIFIED		
.XXX ± .010	CHAMFER ± 10°		

THIS DOCUMENT CONTAINS PROPRIETARY INFORMATION AND SUCH INFORMATION MAY NOT BE DISCLOSED TO OTHERS FOR ANY PURPOSE OR USES FOR MANUFACTURING PURPOSES WITHOUT WRITTEN PERMISSION FROM

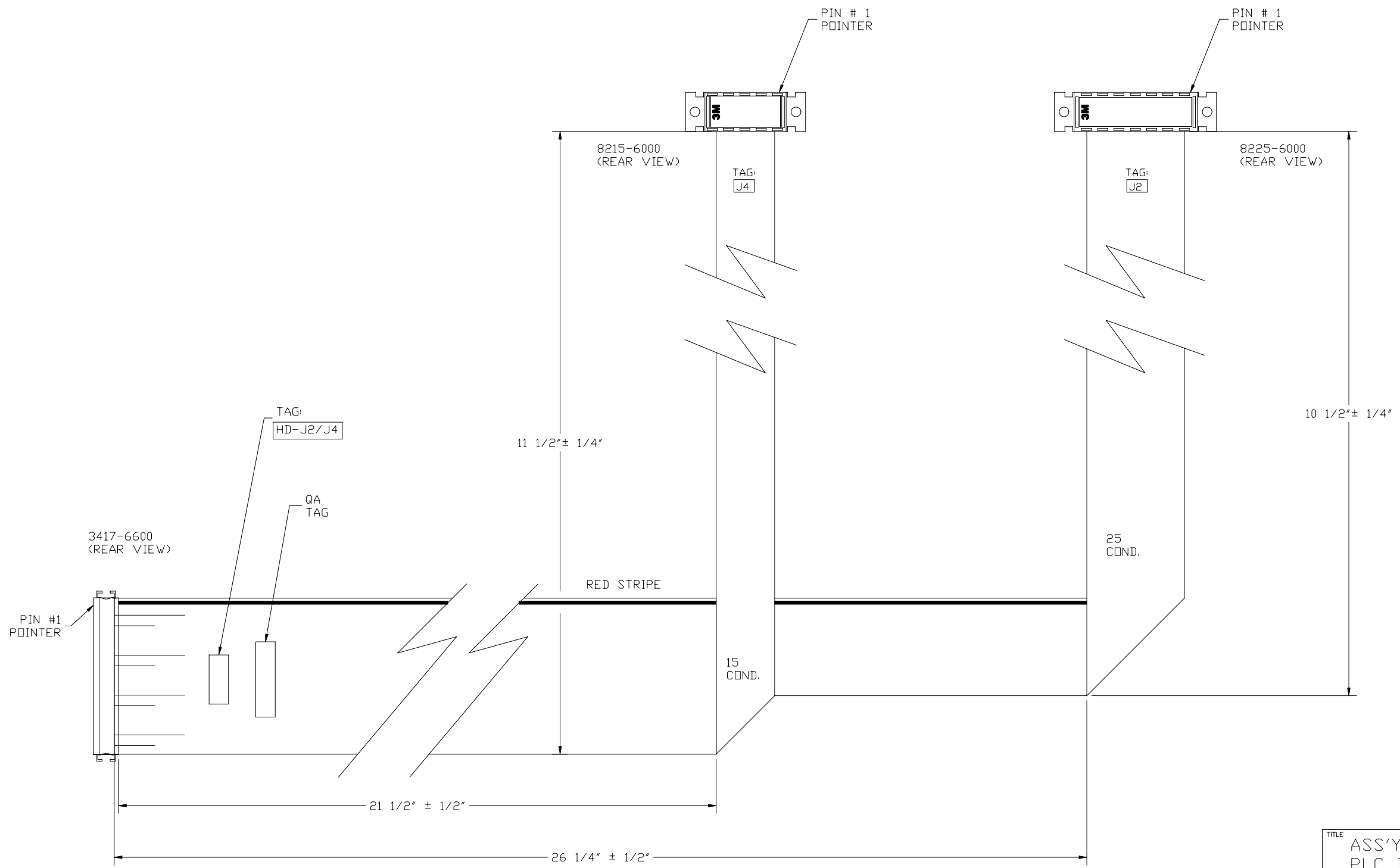
AUTOCON TECHNOLOGIES, INC
FARMINGTON HILLS, MI

SIZE DWG NO. 4205241 REV B

SCALE SHEET 1 OF 1

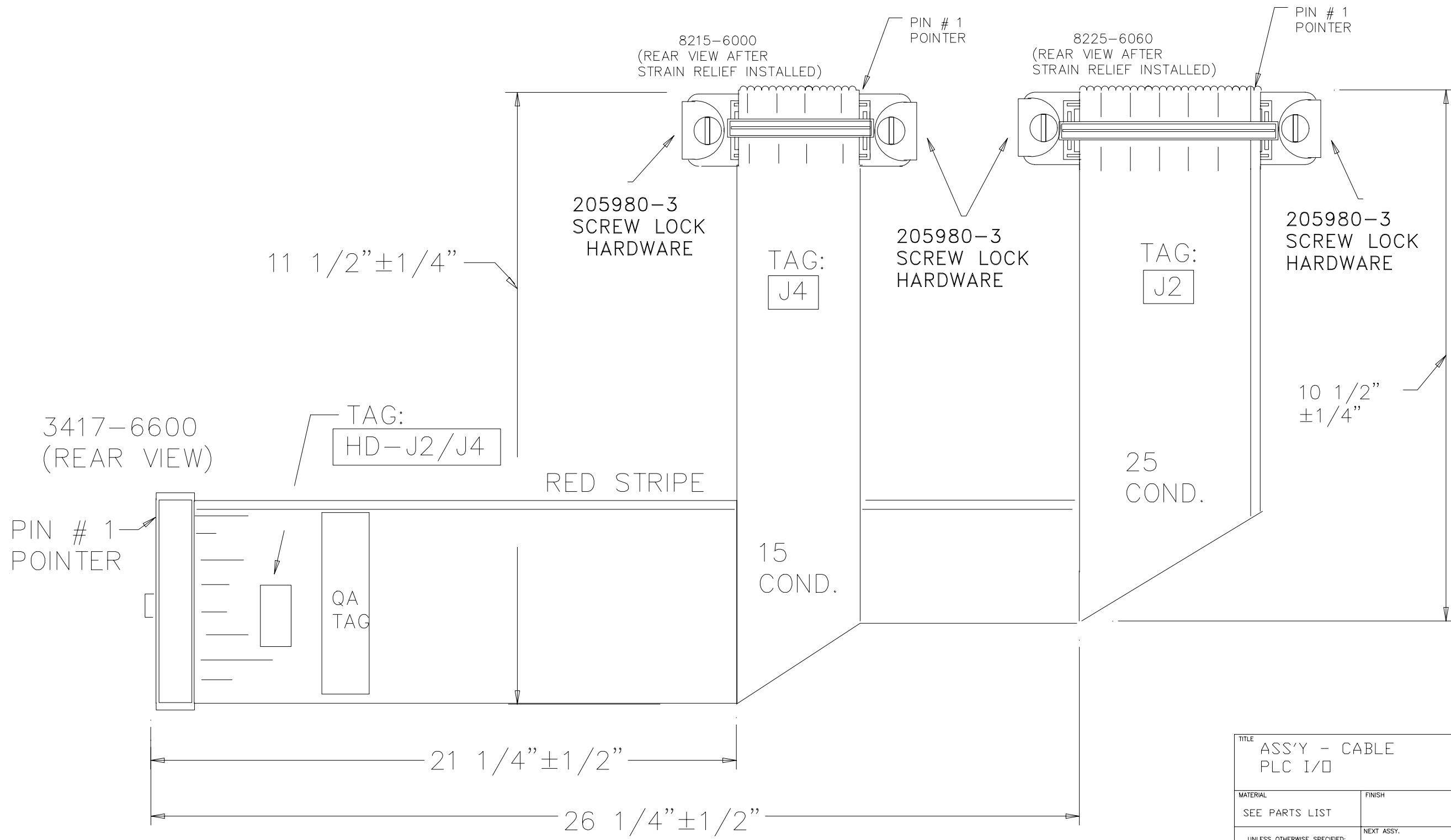
4205241-MOD-TEST.DWG

REV	EEN #	REVISION DESCRIPTION	REV BY	DATE	CHK BY	DATE	APV'D BY	DATE
A	XXXX	RELEASE	BTH	02 DEC 97				
B	41	REV BLOCK, SHEET 2	BTH	07 APR 98				



SUPPLIER: NETCON

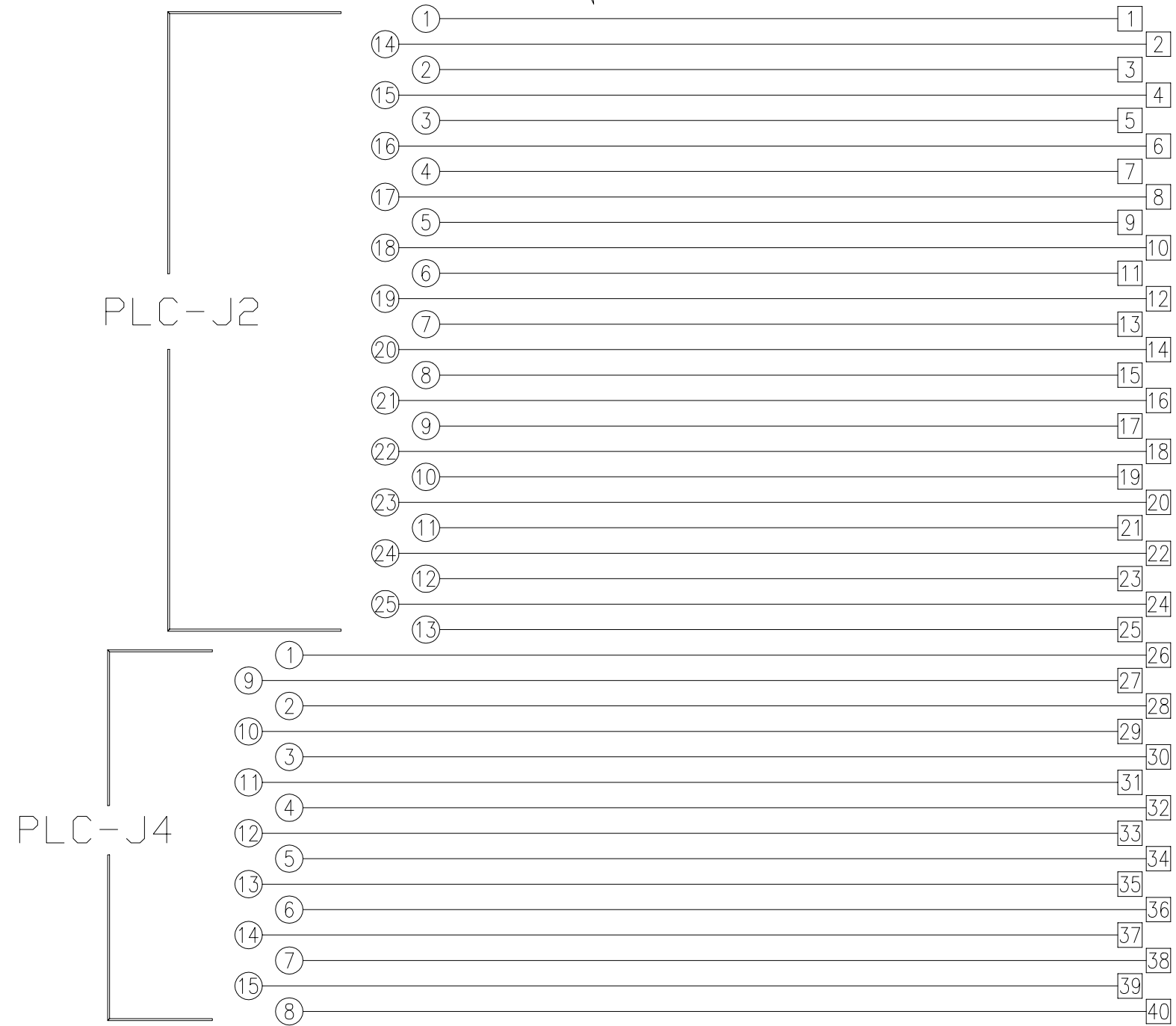
TITLE ASS'Y - CABLE PLC I/O			
MATERIAL		FINISH	
UNLESS OTHERWISE SPECIFIED: DIMENSIONS ARE IN INCHES (DIMS IN PARENTHESES ARE CENTIMETERS) DIMS ARE TO BE MET AFTER SURFACE TREATMENT BREAK ALL SHARP EDGES .010R, APPROX.		NEXT ASSY. FINAL ASSY.	
TOLERANCES		DRAWN J. GONZALEZ	DATE 02DEC97
DECIMALS	ANGLES ± 0° 30'	CHECKED	DATE
.X ± .060	EXCEPT SPECIFIED	APPROVED	DATE
.XX ± .030	CHAMFER ± 10°	ENGR. APPROVAL	DATE
.XXX ± .010			
THIS DOCUMENT CONTAINS PROPRIETARY INFORMATION AND SUCH INFORMATION MAY NOT BE DISCLOSED TO OTHERS FOR ANY PURPOSE OR USED FOR MANUFACTURING PURPOSES WITHOUT WRITTEN PERMISSION FROM: AUTOCON TECHNOLOGIES, INC FARMINGTON HILLS, MI			
SIZE C	DWG NO. 4205293	REV B	
SCALE	SHEET 1 OF 2		



TITLE ASS'Y - CABLE PLC I/O			
MATERIAL SEE PARTS LIST		FINISH	
UNLESS OTHERWISE SPECIFIED: DIMENSIONS ARE IN INCHES (DIMS IN PARENTHESES ARE CENTIMETERS) DIMS ARE TO BE MET AFTER SURFACE TREATMENT BREAK ALL SHARP EDGES .010R, APPROX.		NEXT ASSY. FINAL ASSY.	
TOLERANCES		DRAWN B. HOYES	DATE 03APR98
DECIMALS	ANGLES ± 0° 30'	CHECKED	DATE
.X ± .060	EXCEPT SPECIFIED	APPROVED	DATE
.XX ± .030	CHAMFER ± 10°	ENGR. APPROVAL	DATE
.XXX ± .010			
THIS DOCUMENT CONTAINS PROPRIETARY INFORMATION AND SUCH INFORMATION MAY NOT BE DISCLOSED TO OTHERS FOR ANY PURPOSE OR USED FOR MANUFACTURING PURPOSES WITHOUT WRITTEN PERMISSION FROM:			
AUTOCON TECHNOLOGIES, INC FARMINGTON HILLS, MI			
SIZE C	DWG NO. 4205293	REV B	
SCALE		SHEET 2 OF 2	

CABLE P/N
4205293

HD - J2/J4



TITLE ASS'Y - CABLE PLC I/O			
MATERIAL SEE PARTS LIST		FINISH	
UNLESS OTHERWISE SPECIFIED: DIMENSIONS ARE IN INCHES (DIMS IN PARENTHESES ARE CENTIMETERS) DIMS ARE TO BE MET AFTER SURFACE TREATMENT BREAK ALL SHARP EDGES .010R. APPROX.		NEXT ASSY. FINAL ASSY.	
TOLERANCES		DRAWN B. R.	DATE 04-10-01
DECIMALS .X ± .060 .XX ± .030 .XXX ± .010	ANGLES ± 0° 30' EXCEPT SPECIFIED CHAMFER ± 10°	CHECKED	DATE
		APPROVED	DATE
		ENGR. APPROVAL	DATE
THIS DOCUMENT CONTAINS PROPRIETARY INFORMATION AND SUCH INFORMATION MAY NOT BE DISCLOSED TO OTHERS FOR ANY PURPOSE OR USED FOR MANUFACTURING PURPOSES WITHOUT WRITTEN PERMISSION FROM: AUTOCON TECHNOLOGIES, INC FARMINGTON HILLS, MI			
SIZE C	DWG NO. 4205293	REV B	
SCALE		SHEET 3	OF 3